



Automation

Model: ABL- 306

TENSION LINK LOAD CELL



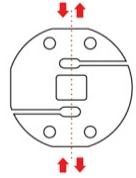
Application

- * To measure rope tension by inserting as a link in to the line
- * To measure towing force of the vehicles and Ships
- * Force Measurement Tension Dynamometer
- * Hanging & Crane Scale
- * Material handling equipments
- * Bollard Pull Test, Tug boats (Over Load detection weigh cable Force testing drag for measurement
- * Cargo handling in Ship Yards.

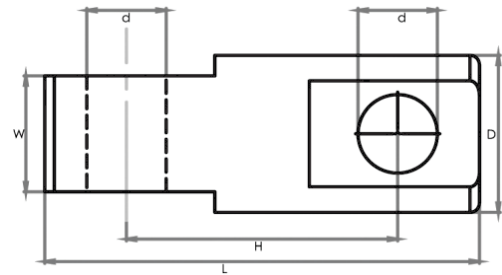
Application Features

- * 2 Tf to 300 Tf capacities are available.
- * This load cell is compact and light weight for portability.
- * High alloy tool steel construction is for ruggedness and safety.
- * Perpendicular loading holes design helps in minimising external moment effects and improves safety and accuracy.
- * Optionally High temperature version for foundry applications can be offered upon request.

Load Diagram :



Dimensions :



CAPACITY	d	D	H	W	L
10T	36	63	134	45	200
20T, 30T	42	88	150	58	240
40T	59	115	195	72	320
125T	84	168	287	124	460
200T	106	210	350	145	575
300T	135	254	465	180	810

Parameters :

All dimension are in mm

Rated Load	10, 20, 30, 40, 125, 200, 300				
Excitation Voltage	5 VDC - Maximum 15VDC	Insulation Resistance (50VDC)	> 5000 Mega Ohms		
Nominal Output	1.0 mV/V	Cable Length (4 Core Screened)	5 Meters		
Non - Linearity	< $\pm 0.1\%$ FSO	Nominal Output	1.0 mV/V		
Hysteresis	< $\pm 0.5\%$ FSO	Safe Overload of Rated Capacity	150%		
Non - Repeatability	< $\pm 0.1\%$ FSO	Ultimate Overload of Rated Capacity	200%		
Creep (30 Minutes)	< $\pm 0.1\%$ FSO	Allowable Side Load	50%		
Zero Balance	$\pm 1.0\%$ FSO	Temp. Compensated Range	0-60°C		
Input Resistance	775 \pm 15 ohms	Temperature Effect on Output	< 0.02 FSO/°C		
Output Resistance	700 \pm 3 ohms	Temperature Effect on Zero	< 0.02 FSO/°C		
Finish & Construction	Electroless Nickel Plated Tool Steel	Deflection	< 0.4 mm at FSO		

